

MobiSUITE

CONFIGURATION SOFTWARE



For MobiControl devices

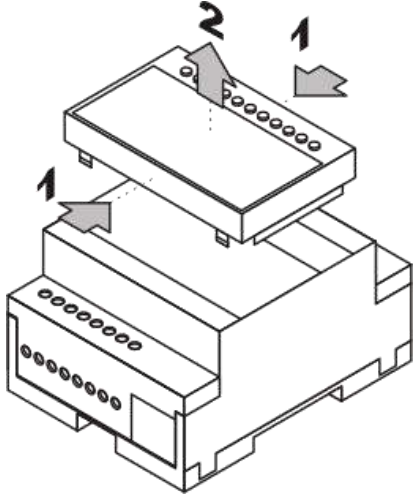
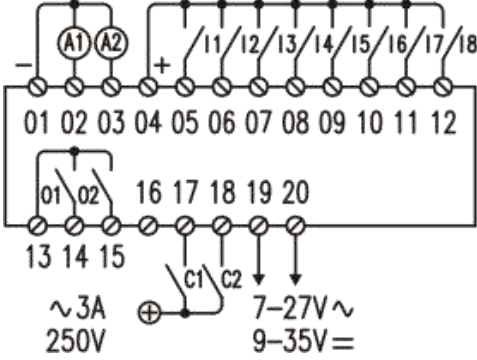


SeNd Technology Ltd
Hungerford – RG17 9QH – UK
T: 01488 668 337
F: 07909 383 861
E: support@sendtech.co.uk
www.sendtech.co.uk

Quick start guide

Please refer to
<http://www.contrive.it/mobisuite/en/>
for full instructions

Hardware setup:

1	SIM card registration	If you have a new unregistered SIM card please register as per the operators instructions and check that the SIM card has credit applied.
2	Insert SIM card	The SIM card fits into the slot underneath the MobiControl unit. Take care sliding the Sim card into the unit making sure the card is contact side down and the cut corner is to the outside of the casing.
3	Connect power, battery and antenna	<p>Power is connected to terminals 19 & 20 (bottom right of unit) and are not polarity sensitive. A 9-35vDC or 7-27vAC supply may be used.</p> <p>Battery – This is already installed in the MobiControl and must be connected. Remove the top lid and connect the 3 pin plug on the right hand side.</p>  <p>Antenna: An external antenna must be connected – please attach a FME connected antenna ensuring that the screw connection is not over tightened (hand tight is sufficient)</p>
4	External wiring	<p>MobiControl can accept digital, analog and counter inputs and has two relay outputs.</p> <p>Wiring diagram:</p>  <p>Usage/configuration of this inputs can be found within MobiSuite</p>
5	Check for mobile network connection.	<p>The blue LED on the front will flash to confirm network connection. OFF = check power, ON = No network/SIM incorrect, SLOW = On network, FAST = On network with communication is progress.</p>

MobiSuite Software installation and usage:

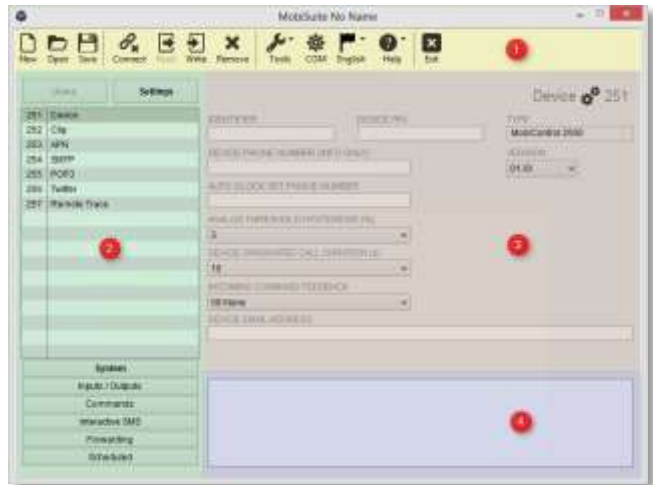
5 Run MobiSuite software and connect the serial cable from your PC/MAC to the MobiControl device.

Mobisuite can be downloaded from:
<http://www.contrive.mobi/en/mobisuite.php>

Note. If you are using a USB to serial convertor please note the COM port number assigned by Windows. You can check this using Control Panel – Devices – Hardware/Device Manager



Click on the COM icon within MobiSuite and select the corresponding COM port number.



5 Connect to the MobiControl from MobiSuite using the Connect Icon.

The default PIN number is 0000

You are now connected and can configure the MobiControl unit.

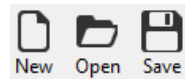


6 How to Read and Write Settings using MobiSuite:

Use the WRITE icon to download any changes you make to the MobiControl.
 Use the READ icon to upload information from the connected MobiControl.

Any items that have been changed and not written will be highlighted in **RED**

To save and load MobiControl configuration files from your PC use the LOAD/SAVE icons.



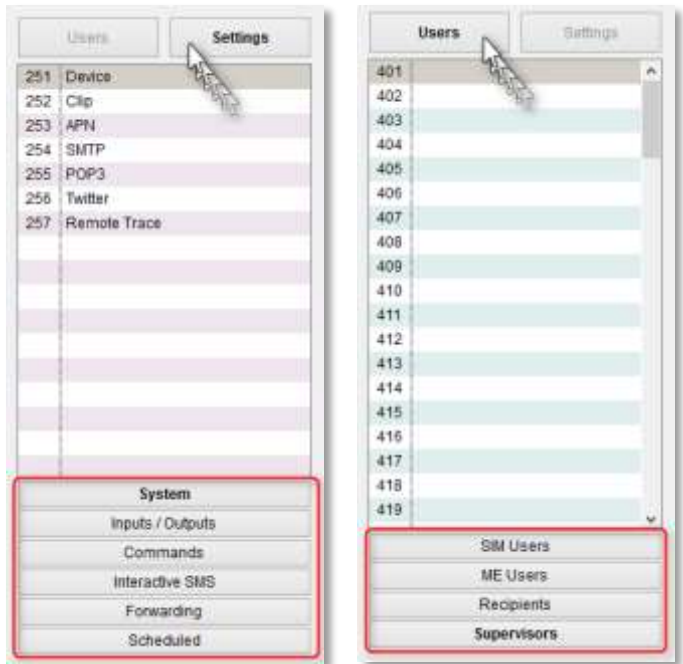
5 There are two main sections within MobiSuite for configuration:

Settings:

System – General device settings
Input/Output - configuration
Commands – remote commands
Interactive SMS – messages for conditional users
Forwarding – forwarding of incoming messages
Scheduled – operations based on time basis

Users:

SIM Users – People who can control the device (stored on the SIM card)
ME Users - People who can control the device (stored in the device with conditions)
Recipients – People who can receive alerts when events occur
Supervisors – People that can modify the configuration remotely



5 Local events that can be used to trigger alerts:

00 - Power Supply Failure
 01 - Input 1 closing
 02 - Input 2 closing
 03 - Input 3 closing
 04 - Input 4 closing
 05 - Input 5 closing
 06 - Input 6 closing
 07 - Input 7 closing
 08 - Input 8 closing

10 - Power Supply Restore
 11 - Input 1 opening
 12 - Input 2 opening
 13 - Input 3 opening
 14 - Input 4 opening
 15 - Input 5 opening
 16 - Input 6 opening
 17 - Input 7 opening
 18 - Input 8 opening

21 - Counter Input 1 closing
 33 - Counter Input 2 closing

31 - Counter Input 1 opening
 32 - Counter Input 2 opening

40 - Low Battery
 41 - Falling below ADC1 threshold
 42 - Falling below ADC2 threshold
 43 - Low temperature (internal sensor)

50 - High Battery
 51 - Rising above ADC1 threshold
 52 - Rising above ADC2 threshold
 53 - High temperature (internal sensor)

61 - Rising above Time/Pulse Counter Input 1 threshold
 62 - Rising above Time/Pulse Counter Input 2 threshold

70 - MCC changed
 71 - MNC changed
 72 - LAC changed
 73 - CI changed

80 - Output 1 set
 81 - Output 2 set
 82 - Output 1 reset
 83 - Output 2 reset

Each event change can be used to trigger alert messages. In this guide we will cover sending SMS messages and emails from Input 1 closing.

Full details of each event and messaging types can be found in the help file and full MobiSuite user guides

MobiControl configuration:

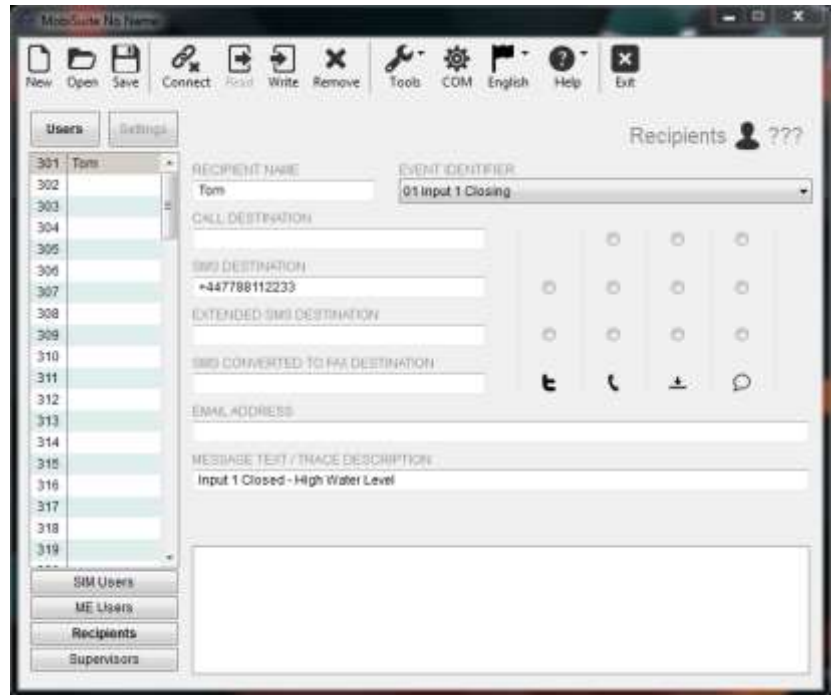
5 Sending SMS messages on input changes (events):

MobiControl has 8 standard digital inputs that can be configured to send SMS messages to multiple recipients when the open, close or both.

Configuration:

1. Click Users
2. Click Recipients
3. Add recipient name
4. Add SMS destination number with +44 for UK and no leading zero
5. Add the message text you wish to send
6. Select the event type from the drop down list on the right – 01 Input 1 Closing
7. Write this change to the MobiControl using the WRITE arrow as explained in the last section.

You have now configured your first SMS alert message. You can now add further alerts for other inputs or add extra recipients for each event.



5 Sending Email messages on events:

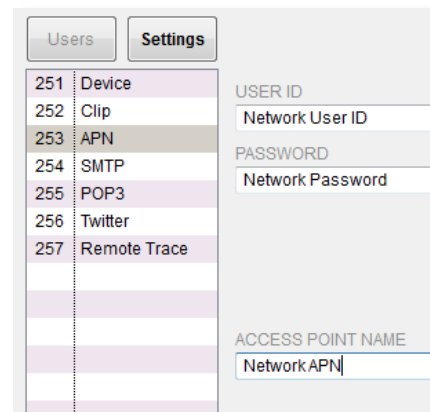
To send email you first need to set-up the APN settings for the network SIM card you are using. This can be found in the Settings section under System settings.

Also add the corresponding SMTP or POP3 server addresses.

Please check with your SIM card provider for these settings.

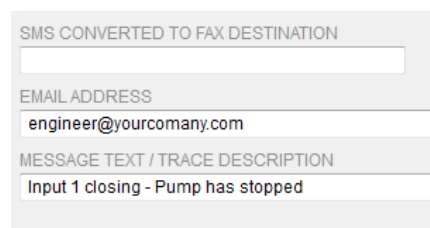
Eg: for GiffGaff(O2) UK SIM

USER ID	giffgaff
PASSWORD	Password
APN	giffgaff.com
SMTP	smtp.o2.co.uk



6. Sending Emails:

After the APN, UserID, Password etc have been set you can enter the email alert message following the same procedure for SMS alerts above. Now enter the email address rather than the mobile number of the recipient.



Please refer to MobiSuite help and support documentation for full configuration details.

Notes: