

# GSM Informant

## Quick start set up guide

### Hardware set-up

Carefully insert SIM card in tray with contact face down.

Attach any expansion inputs and output modules using the small R45 ribbon connectors.

Apply power supply to terminals 18 & 20 on main unit ensuring voltage is within range and polarity is correct.

### Programming mode:



Hold down the "RELAYS-OFF" pushbutton on the front of the unit and turn the power ON. Release the button as soon as the LED has lit up and gone off once. You are now in programming mode.

Connect the RS232 serial programming lead and the other end to you PC making a note of the COM port you are using (COM 1 to COM 4).

### Install and start CELSOFT.

- 1 Change the "Hardware settings" to match the COM port you are using. Click "Connection" – "connect to device" this will now connect to the device.

### Programming: Hardware Configuration

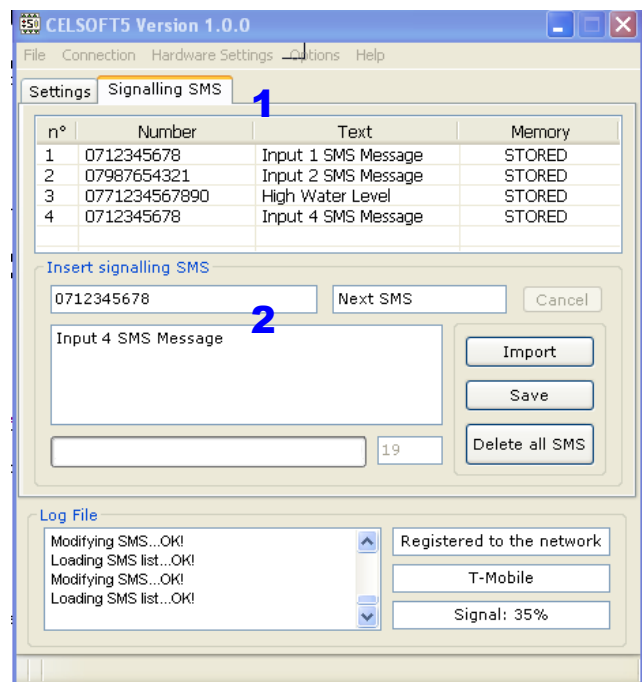
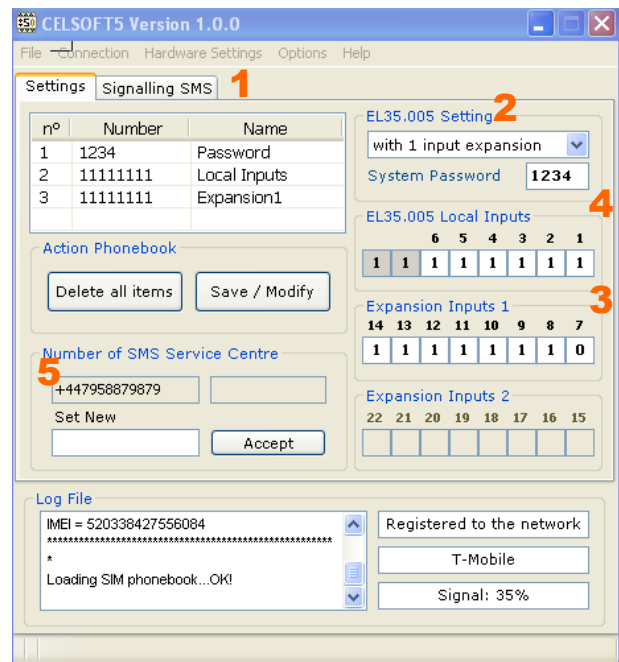
- 2 Configuration: If you have any expansion units please select these from the drop down box entitled "EL35.005 settings". In the matrix below you can now select whether the inputs and normally open (OFF to ON) or normally closed (ON to OFF) by placing a "1" or "0" in each corresponding box.
- 3
- 4 Please also set a pass code for remote control of the relay outputs (4 digits).
- 5 SMS Centre No: This must correspond to the network provider of the SIM card. Have a look at <http://www.sendtech.co.uk/GSM%20FAQ.shtml#service> to find the matching number.

Click SAVE/MODIFY to record this information onto the SIM Card.

### Programming: Input Alarm Message Configuration

- 1 Choose the tab "Signalling SMS". This is where you store each alarm SMS message for each alarm input channel.
- 2 Start by entering the message recipient's number (usually a mobile number) and then add the text message you wish to send when the input closes (or opens (see 3 above)). The text is entered in the large box below the number. Click "Save" when you have finished each entry.

Now press the "RELAYS OFF" button again to come out of programming mode.



### Controlling the outputs via SMS

Send a SMS text in the following format:

**\*PASS#1#1#0#2**

\* = start of SMS

PASS = Pass code set during config eg 1234

#1 = turn ON

#1 = output 1

#0 = turn OFF

#2 = output 2

this string can continue to control all of your outputs.